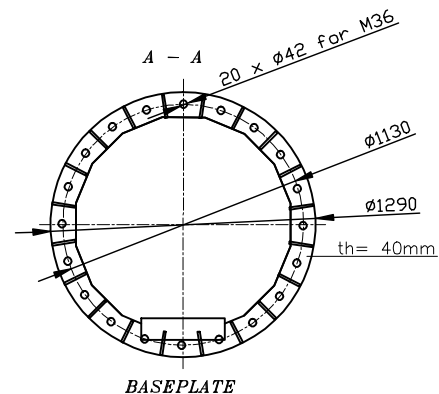
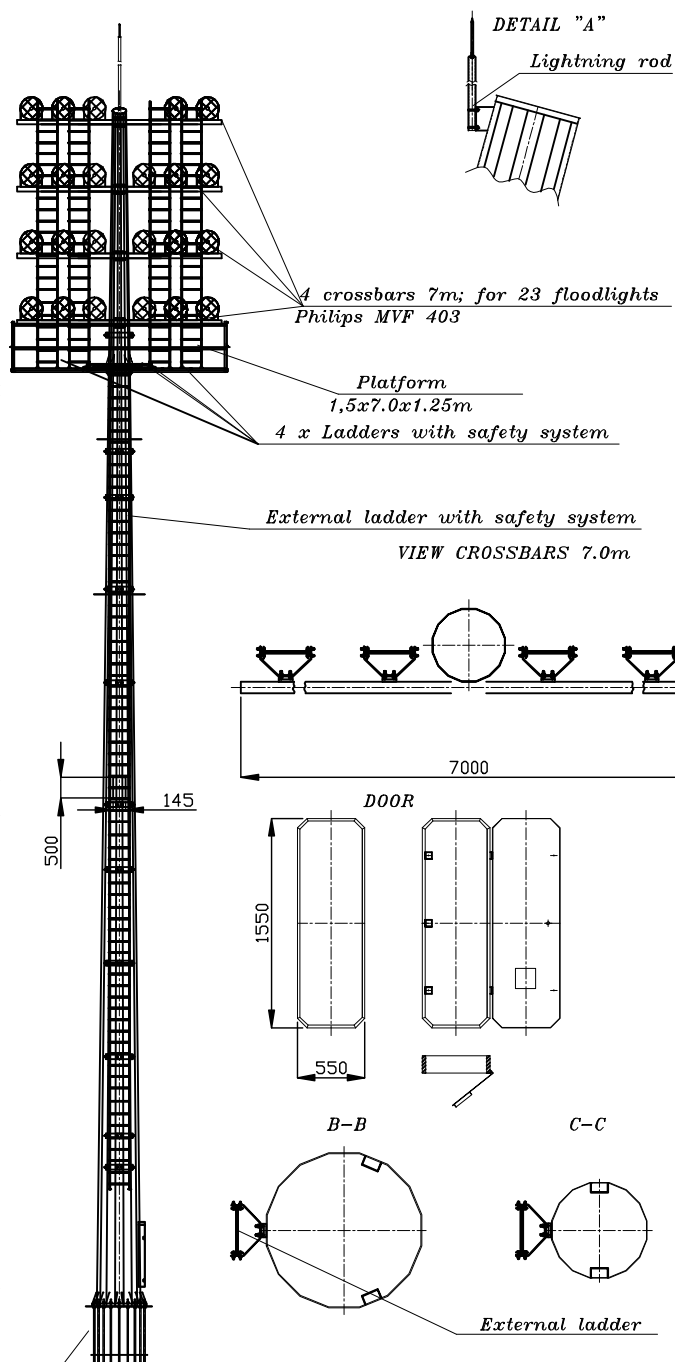


ANCHOR BOLTS
M36x1900 kl. 6.8 20pcs



Draw	Design	Check	Material	Date	Edition
A. Kiciak	A. Kiciak	A. Brylinski	S355J2	17.10.2014	I
Description					
Mast H1=28M 16-sides for 23 floodlights					
Calc				Scale	Sheet
2014845V1R0				%	1/1